

## Map Update Portal Landing Page

▶ <https://toyota-carmax.welcome.naviextras.com>



# Software Update instructions

### **Welcome to Software updates**

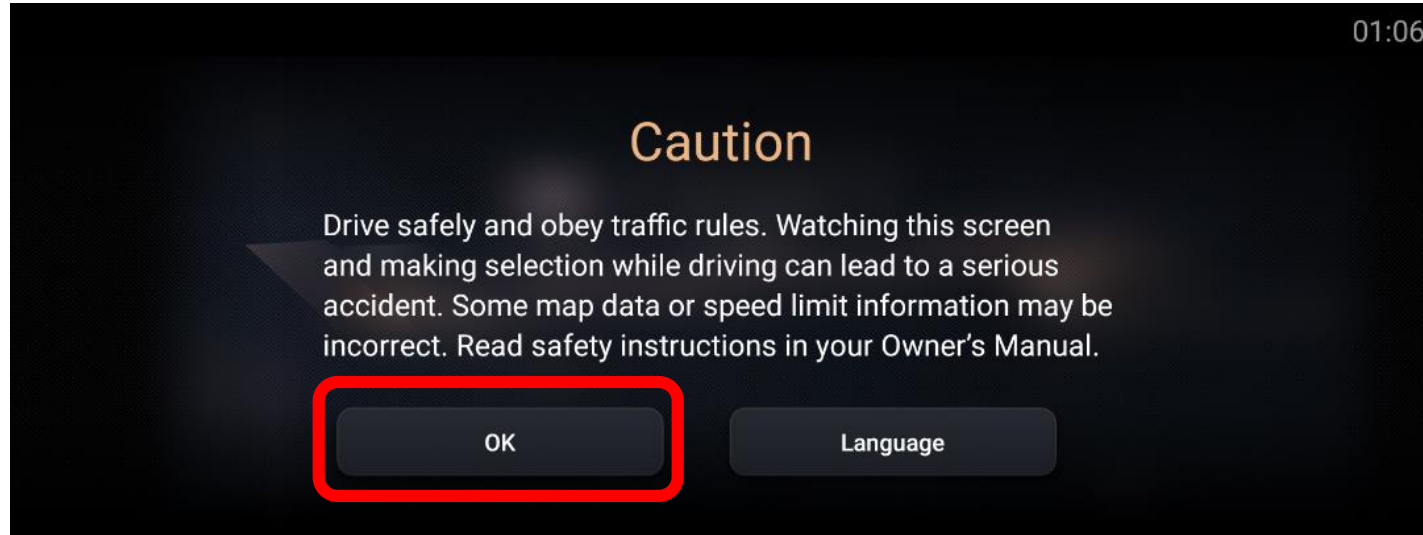
**Firstly, Check software version**

**Before update, please read the notice and update preparation**

# Check Navigation Version

---

## Check Navigation Version – cont.

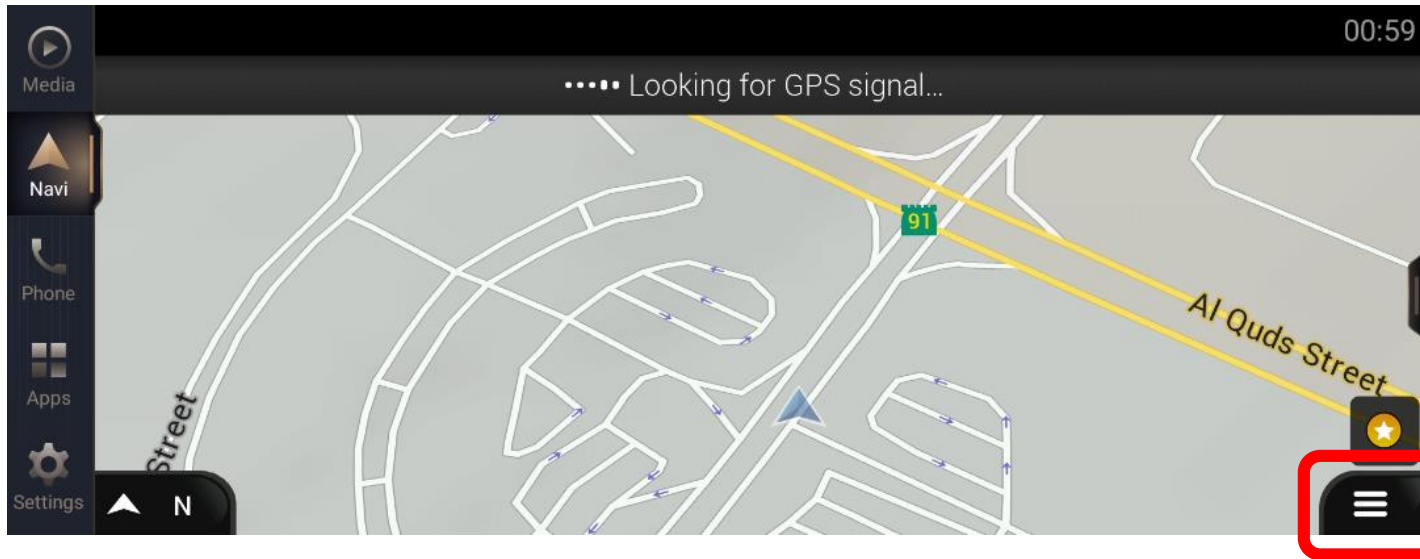


### Prepare your vehicle

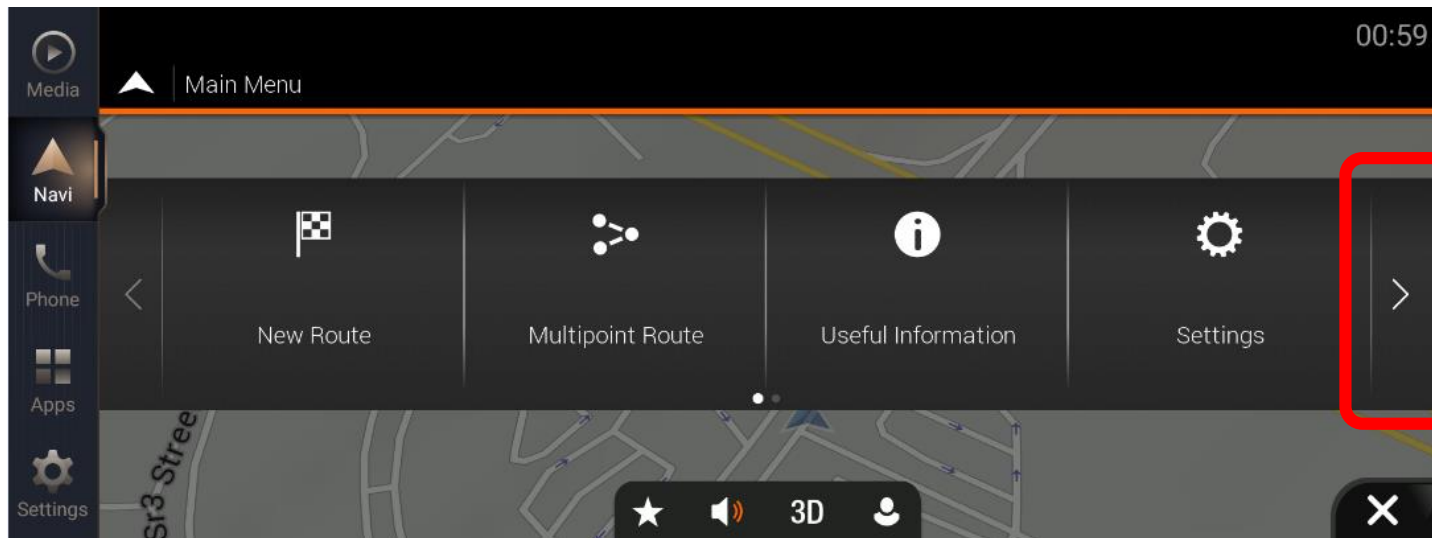
- Switch your vehicle to “ENGINE ON” until the Navigation System enters the CAUTION page
- Click [OK] and continue to the main page

Step1. Please Insert the formatted USB flash drive to the USB port on your Navigation System, then click [Navi].

## Check Navigation Version – cont.

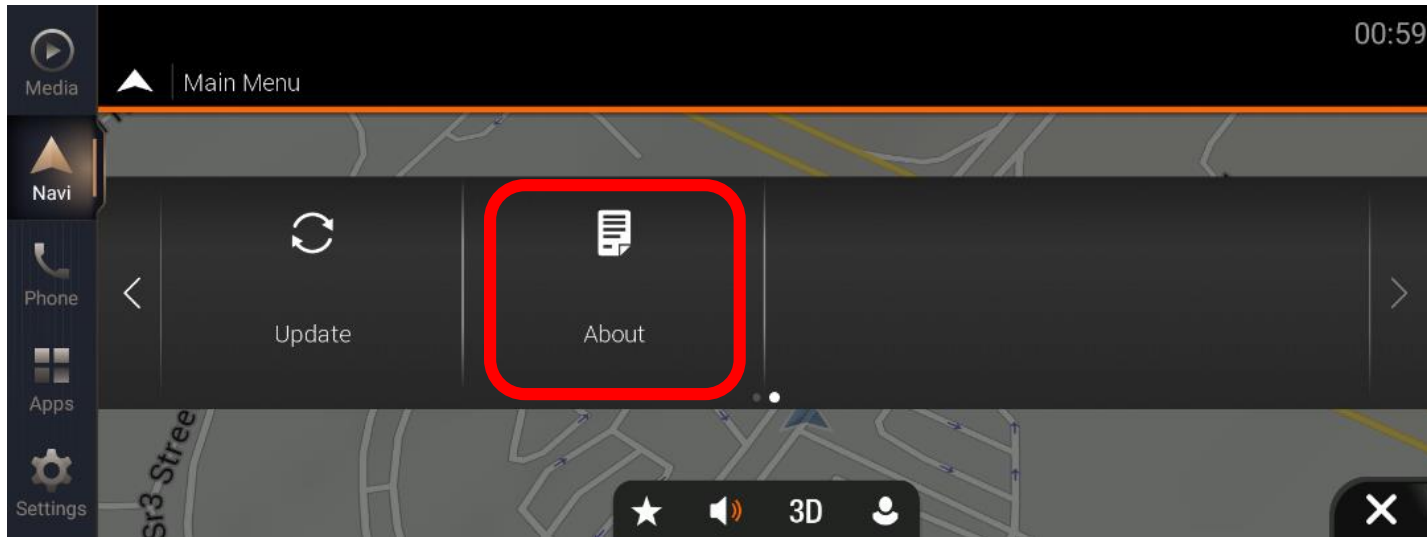


Step2. Click [[Navigation Main Menu](#)]



Step3. Click [[>](#)]

## Check Navigation Version – cont.

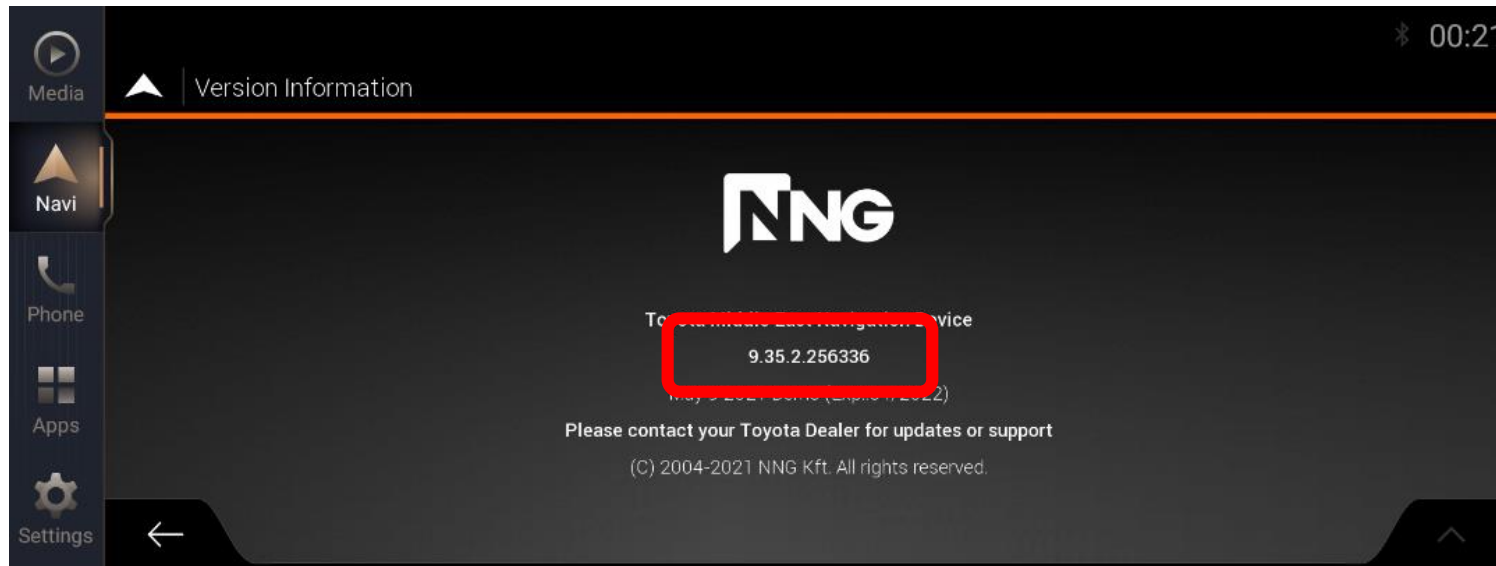


Step4. Click [\[About\]](#)



Step5. Click [\[Version Information\]](#)

## Check Navigation Version – cont.



### Step6. Check Navigation version

- If version is [9.35.2.256336], Please follow the instruction to update Navigation System Software.
- If version is **not** [9.35.2.256336], Please start Map update directly.

Go back to the website:

[https://toyota-carmax.welcome.naviextras.com/guide\\_lc300\\_en.html](https://toyota-carmax.welcome.naviextras.com/guide_lc300_en.html)

and carry out the Step2 directly :

“SYNCHRONIZE THE USB FLASH DRIVE WITH THE NAVIGATION SYSTEM”.

# Update preparation

---

## **Important Notice**

- **USB flash drive requirement**

- **USB 2.0 flash drive**
- **Above 2GB but below 32GB**
- **FAT32 file system**

 **Other type or format drive flash may not be compatible.**

- **Navigation System update will take about 20 minutes, during this update your Navigation System must keep the engine on.**

 **Unexpected Engine off will cause the software update to fail, even unable to boot.**

- **The Navigation System will restart several times automatically during the update process. Please do not remove USB flash drive and do not operate or engine off the Navigation System until a message “updated successfully” popup.**

 **Unexpected USB flash drive removing will cause the software update to fail, even unable to boot.**



## Update Preparation

### Prepare an USB flash drive

- Prepare a USB flash drive and check the available space is more than **2 GB**.

### Prepare software update files

- Download the update package file “**22AJL312NV\_SW005\_03.08\_210615\_C.zip**” from your PC.
- Download link: [https://toyota-carmax.welcome.naviextras.com/guide\\_lc300\\_en.html](https://toyota-carmax.welcome.naviextras.com/guide_lc300_en.html)
- Copy the “**22AJL312NV\_SW005\_03.08\_210615\_C.zip**” into the root directory of USB flash drive.

 Do not unzip the update file

---



22AJL312NV\_SW005\_03.08\_210615\_C.zip

**Software update files  
(.zip format)**

## Update Preparation – cont.

- Insert the USB flash drive into the USB slot of the Navigation System front facial.

 Do not remove USB flash drive during the process of updating.



Insert USB flash drive

LAND CRUISER Car Navigation System

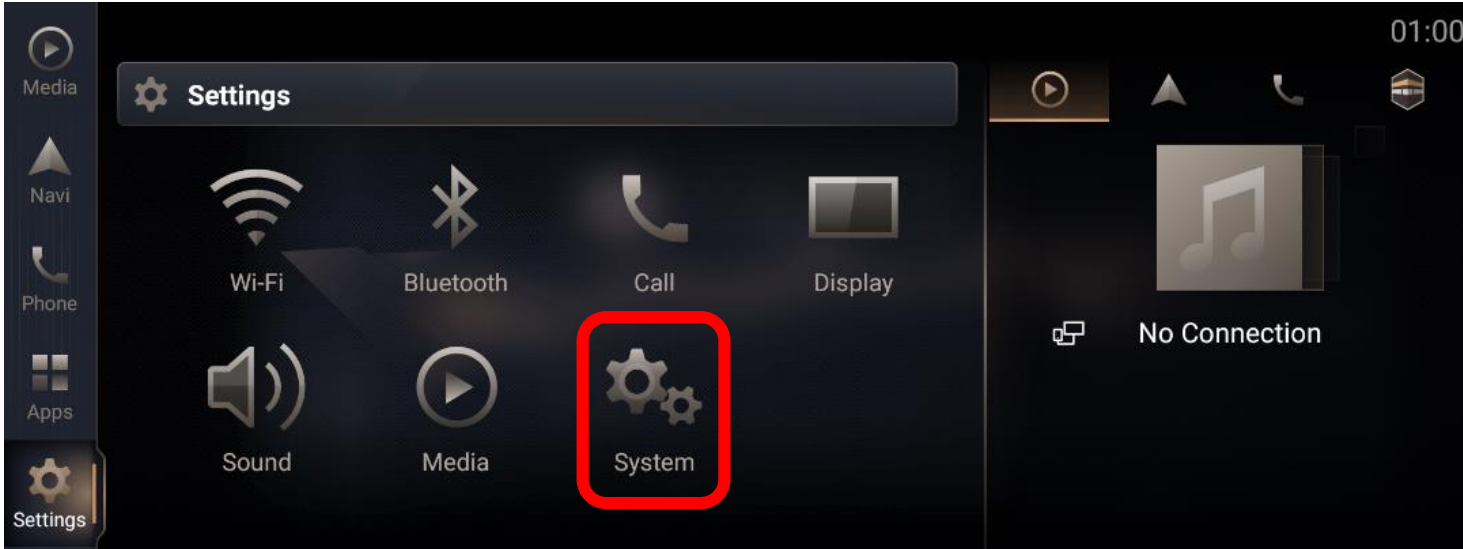
# Update steps

---

## Update Steps – cont.

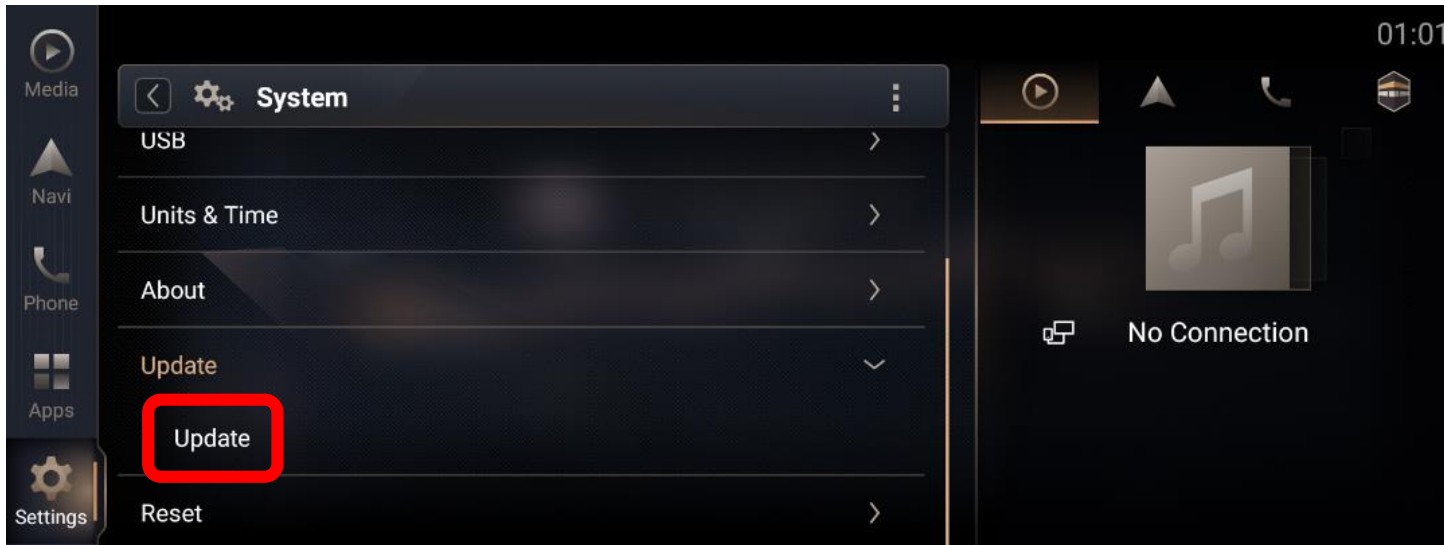


Step1. Click [\[Settings\]](#)

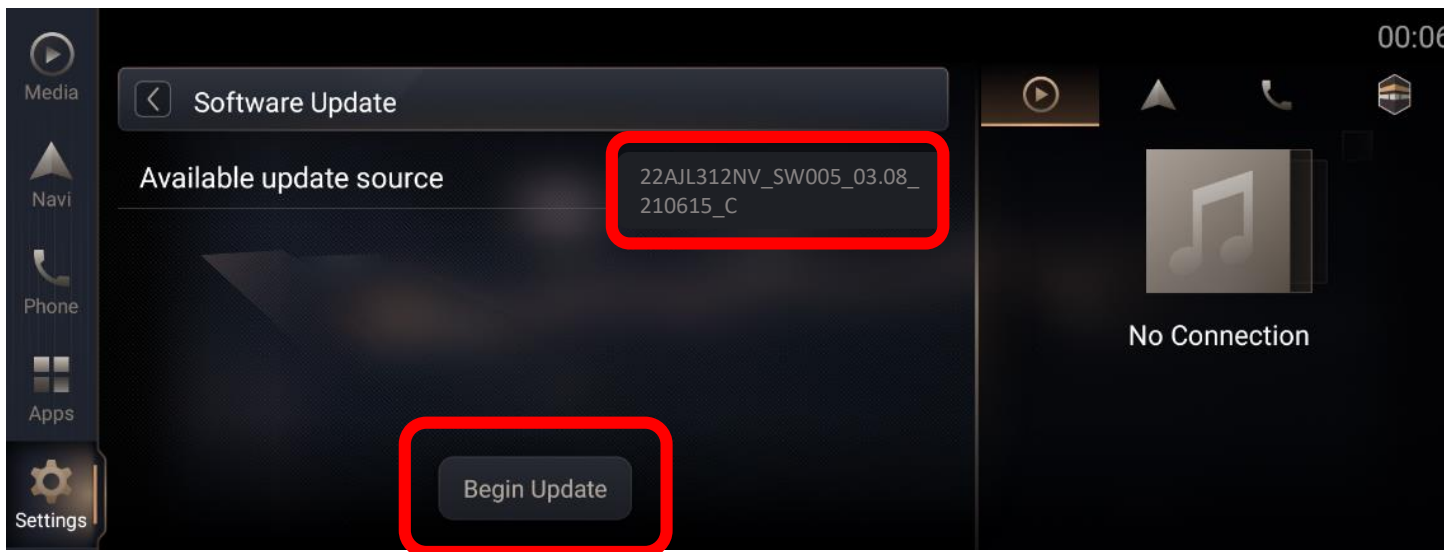


Step2. Click [\[System\]](#)

## Update Steps – cont.



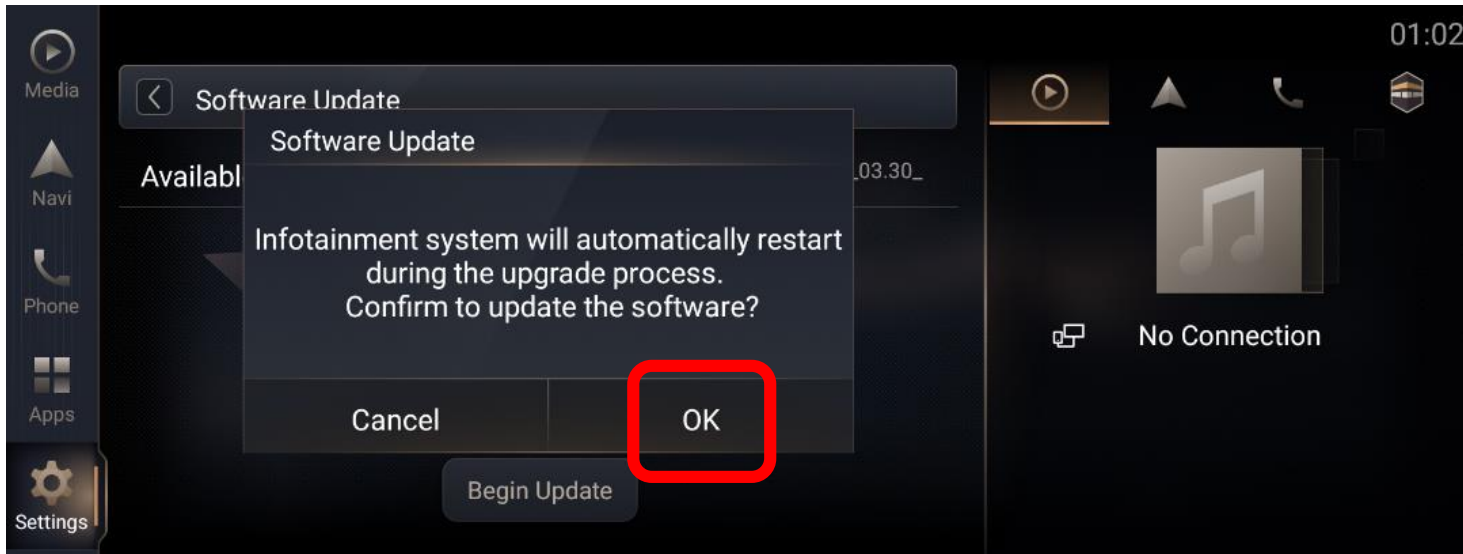
Step3. Scroll down the list and click **“Update”**, then click **“Update”** to enter the software update page.



Step4. In software update page, available update package will show up automatically if there is available package detected from USB flash drive. click **[Begin Update]** to the next step.

\* Note: If you do not see the update source, refer to **Trouble Shooting**. (Page18 )

## Update Steps – cont.



**Step5.** A message will pop-up before enter the software update process, click **[OK]** and the installation process will start automatically.

**\* Note:** If you do not see the update progress, refer to **Trouble Shooting.** (Page19 )

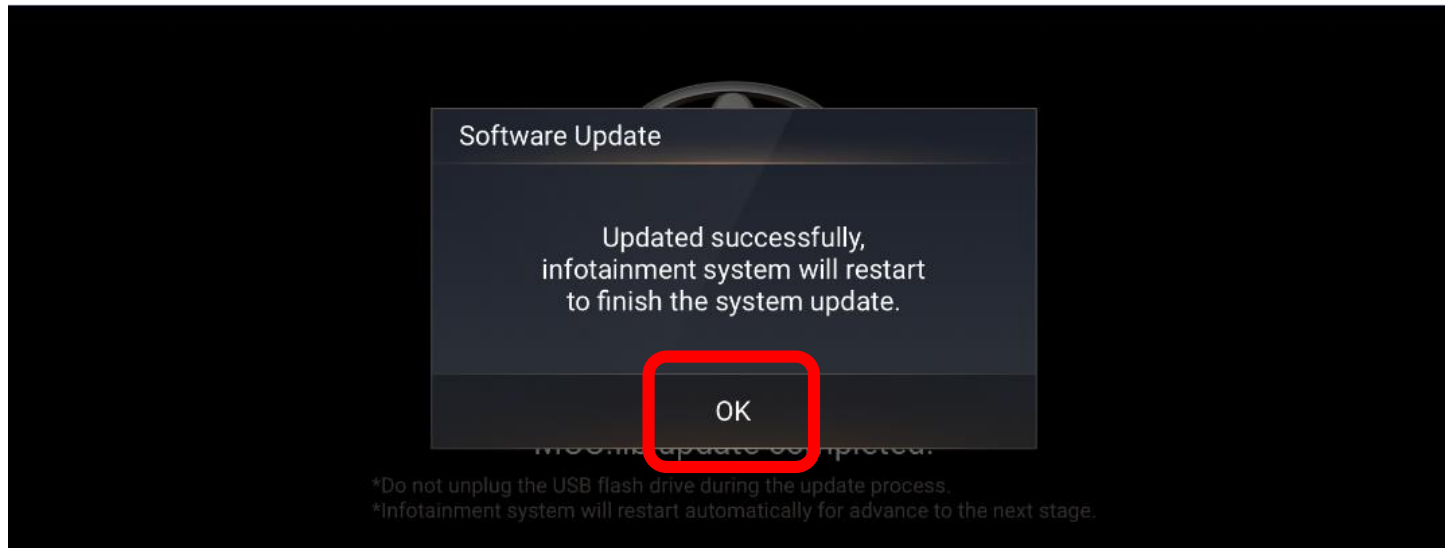
**Step6.** The update progress will be shown in the page, Navigation System will restart several times automatically for advance to next stage during the installation process.



**-It will take around 20 minutes.**

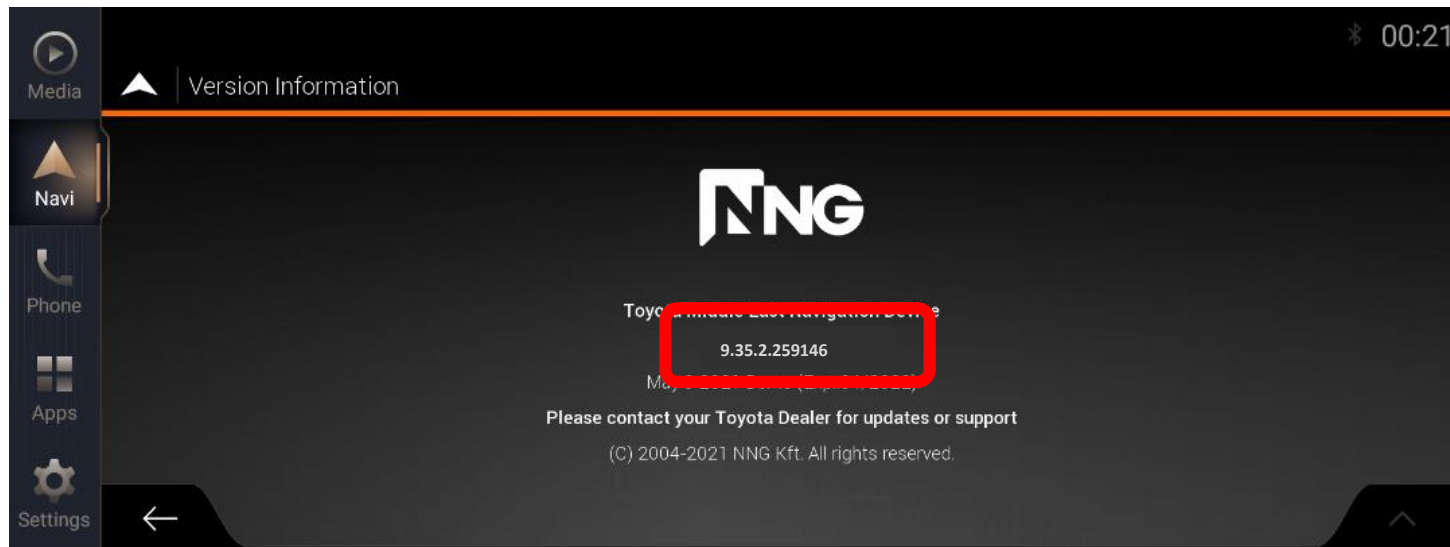
**-Do not remove USB flash drive and operate or engine off during update process until a message “Updated successfully” popup.**

## Update Steps – cont.



**Step7.** When the installation was finished, a message will pop-up shows Updated successfully, click **[OK]** and Navigation System will restart again to finish the system update.

**\* Note:** If you do not see the successfully message, refer to **Trouble Shooting.** ( Page20,21,22 )



**Step8.** After the system update process, click **[Navigation Main Menu]** -> **[>]** -> **[About]** -> **[Version Information]**, and check navigation version.

For detail, refer to Page 3.

**\*Note:** Please check navigation version is the same as “9.35.2.259146”.

## Caution

Drive safely and obey traffic rules. Watching this screen and making selection while driving can lead to a serious accident. Some map data or speed limit information may be incorrect. Read safety instructions in your Owner's Manual.

OK

Language

**Car Navigation System will restart automatically after finished the overall updating process.**

**Software update is Finished.**

**Pleaser follow the map update instructions from the Step2 of website :**

**[https://toyota-carmax.welcome.naviextras.com/guide\\_lc300\\_en.html](https://toyota-carmax.welcome.naviextras.com/guide_lc300_en.html)**

**“STEP2: SYNCHRONIZE THE USB FLASH DRIVE WITH THE NAVIGATION SYSTEM”.**

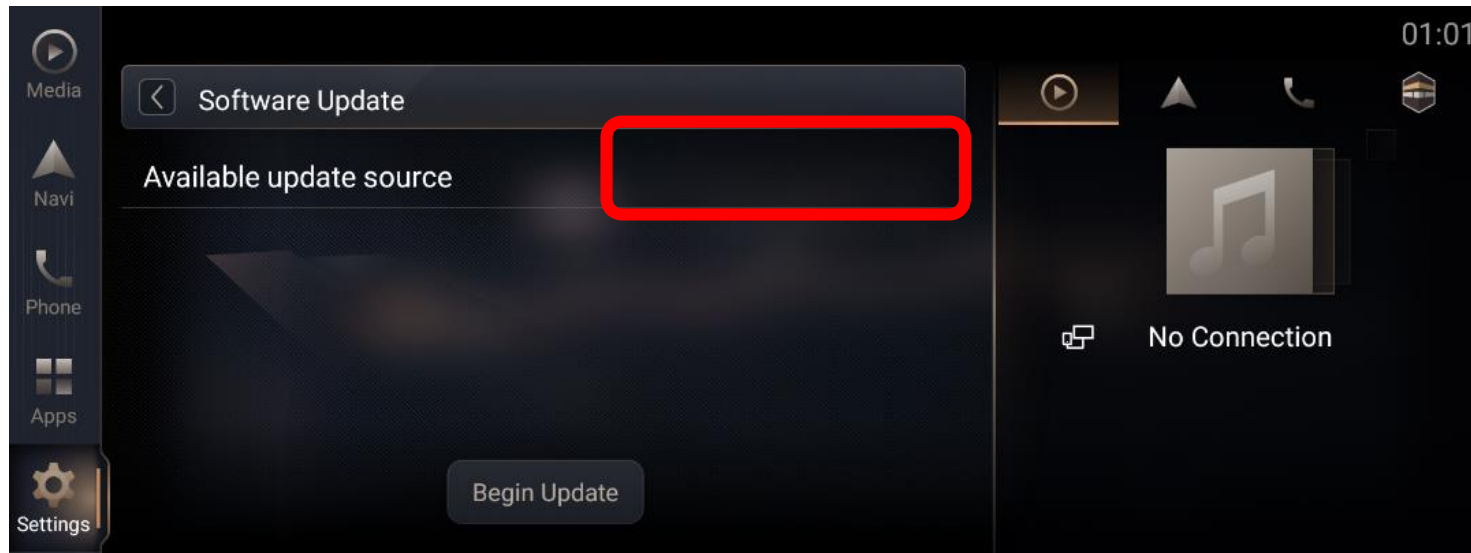


# Trouble shooting

---

# Trouble Shooting

## Software Update page does not show available update source after inserted USB flash drive

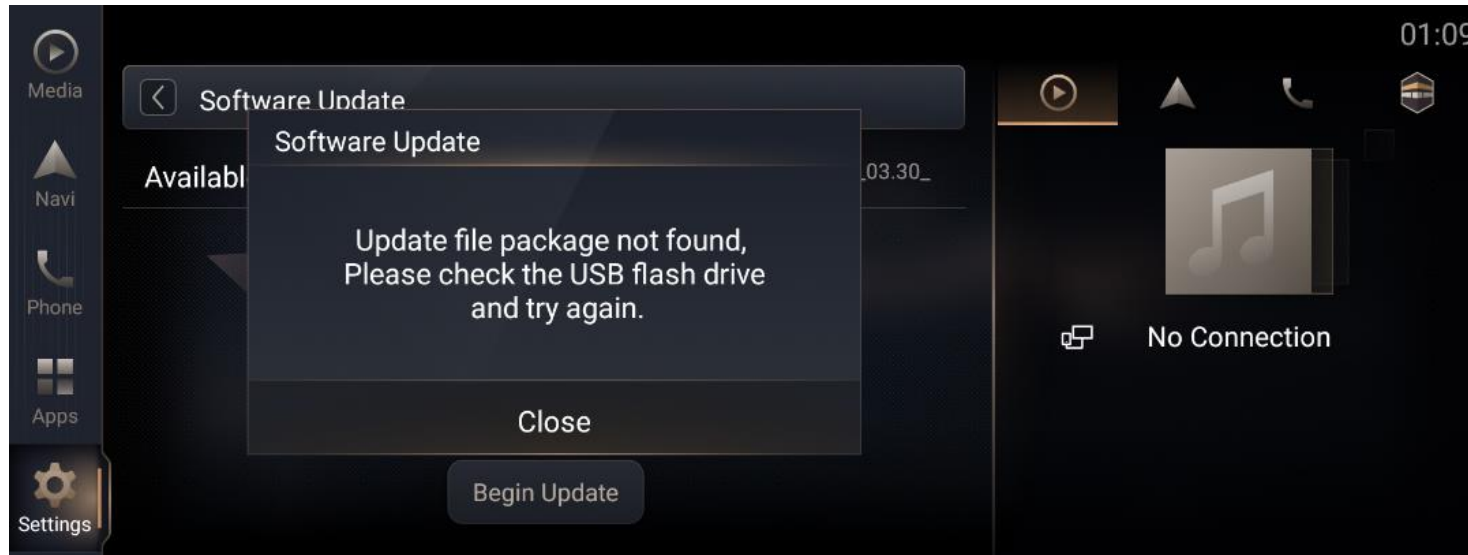


It could be:

- ◆ USB flash drive is not inserted properly  
[Action] Re-insert USB flash drive.
- ◆ USB Connection is set as “Fast Charge Mode”.  
[Action] Set as “Data Transfer Mode”.  
Go Settings->System->USB->USB Connection.
- ◆ File location or format is not correct  
[Action] Check  
[“22AJL312NV\\_SW005\\_03.08\\_210615\\_C.zip”](#)  
in the root of USB flash drive.

## Trouble Shooting

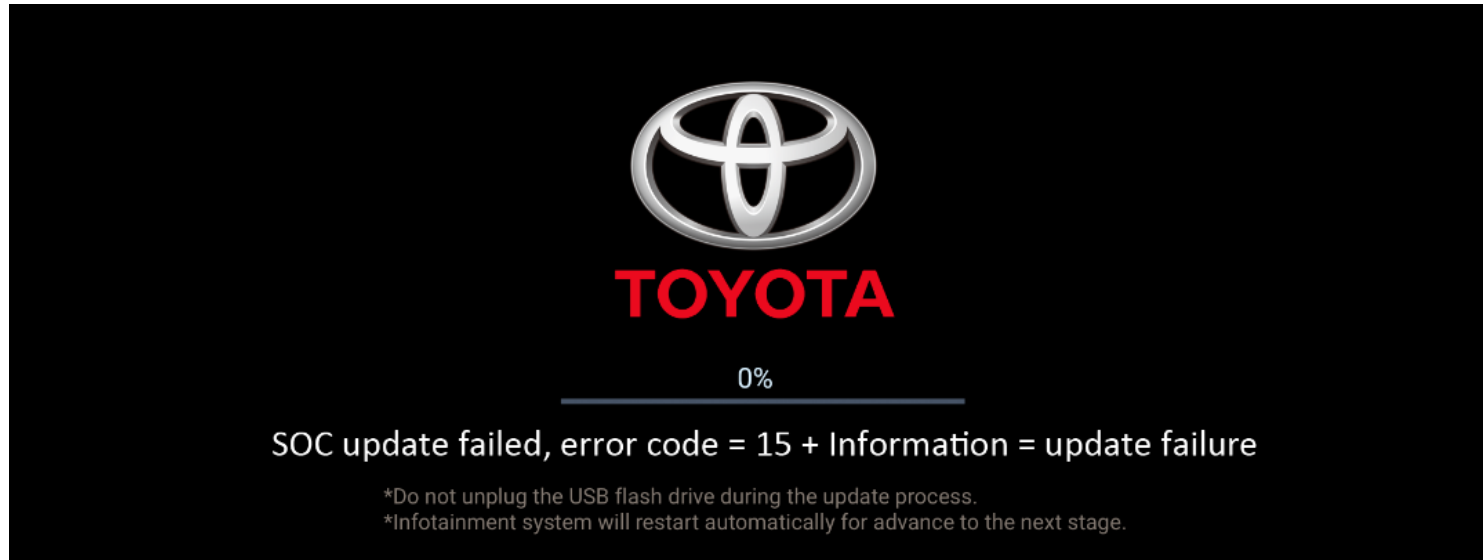
**System pop-up a window which shows “Update file package not found...” after pressing [Begin Update] of Software Update page**



It could be:

- ◆ OS version is greater than [\[03.08\\_210615\\_C\]](#),  
[Action] Follow Page15 to recheck OS Version.
- ◆ USB flash drive is not inserted properly  
[Action] Re-insert USB flash drive.

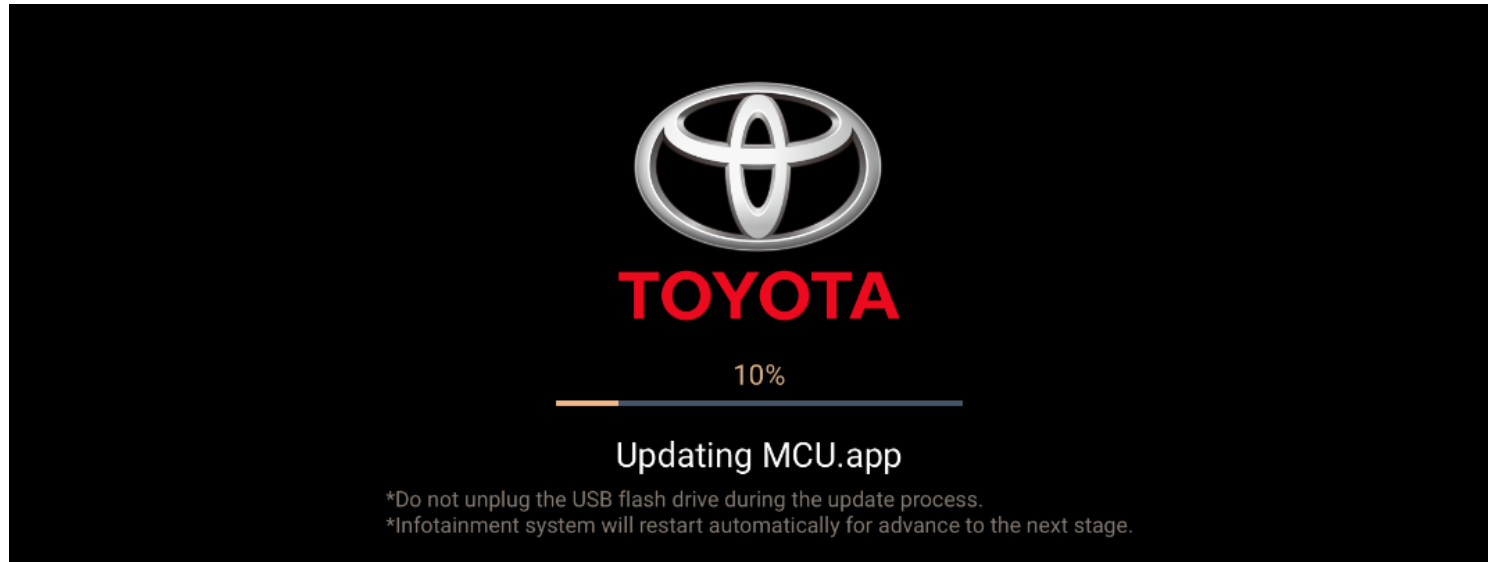
### Update Failed with Error Code 15



If Navigation System update failed with a message “SOC update failed, error code=15+Information = update failure”.

- ① Please turn Engine OFF over 5 seconds.
- ② Turn Engine ON to restart Navigation System.
- ③ Start a factory data reset.
- ④ Insert USB flash drive again and repeat update steps.

### MCU related update, and get stuck over 5 mins



During the MCU related update, and get stuck over 5 mins

- ① Unplug the USB flash drive and turn Engine off.
- ② Disconnect the negative electrode of the battery and Re-connect it.
- ③ Turn Engine on to restart Navigation System.
- ④ Re-insert USB flash drive again and repeat update steps above.

**\*Note: Some items must be initialized after the battery being reconnected.**

**⚠ If not familiar with battery disconnect operation, please find Toyota Dealer for further support.**

### Accidentally unplug USB flash drive / Engine off the Navigation system during update process



If the update is accidentally interrupted due to USB disconnect or engine off problem

- ① Turn Engine on to restart Navigation System.
- ② Start a factory data reset.
- ③ Insert USB flash drive again and repeat update steps above.